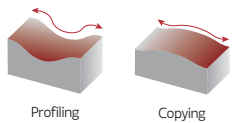


# BALLPRO

## Indexable Ball Nose Cutter



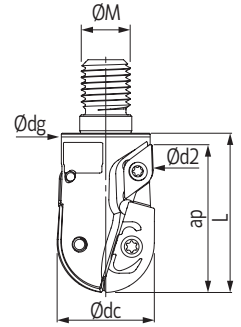
**BALLPRO**  
63090 NEW



SINCE 1916

# BALLPRO 63090

NEW



Threaded Coupling

Order code Código	Reference Referência Referencia		Dimensions   Dimensões   Dimensiones (mm)					Specifications Ap max (mm)	Kg	Insert	Insert 2	Stock
			ØDc	ØDc2	Ød/M	Ødg	L					
181125000	032R63090-02-M16052	2	32	31,9	M16	29	52	48	0,168	XPGT 3206	DCMW 11T3	

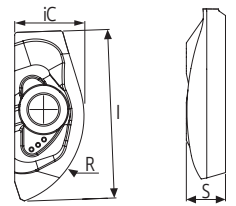
Stock item | Produto de stock | Itens de stock

Available under request | Disponível sobre consulta | Disponible bajo consulta

## XPGT 3206

XPGT

NEW



	<sup>(2)</sup> Grade code	P		M	K	S	Dimensions (mm)			
		G4	G6	G6	G4	G6	iC	S	I	R
<sup>(1)</sup> Geometry code	ISO Reference	PH7920	PH7740	PH7740	PH7920	PH7740				
1112485	XPGT 3206-MP						12,576	7	30,6	16

First choice | Primeira opção | 1ª opción

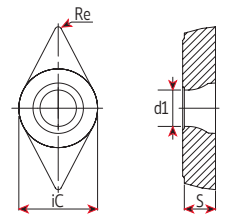
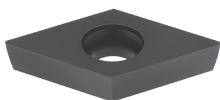
Stock item | Produto de stock | Itens de stock

Available under request | Disponível sobre consulta | Disponible bajo consulta

Insert order code = (1) Geometry Code + (2) Grade Code

## DCMW 11T3

DCMW



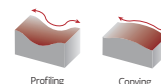
	<sup>(2)</sup> Grade code	L5	Dimensions (mm)			
			iC	S	Re	d1
<sup>(1)</sup> Geometry code	ISO Reference	PH5705				
1120305	DCMW 11T304		9,525	3,97	0,4	4,4

First choice | Primeira opção | 1ª opción

Stock item | Produto de stock | Itens de stock

Available under request | Disponível sobre consulta | Disponible bajo consulta

Insert order code = (1) Geometry Code + (2) Grade Code



## SPARE PARTS || Complementos | Repuestos

Order separately

Insert	Insert Screw	Key (Torx)	Key (Torx - Nm)	Torque Value
XPGT	P0501302	PT20	DT2050	5.0 Nm
DCMW	P0400900	XT15	DT1530	3.0 Nm

## GRADES SELECTION GUIDE || Guia para selecção de graus | Tabla para selección de calidades

ISO	PSM	Material	HB (Brinell)	Grades	
				← Wear Resistance	Toughness →
				PH7920 	PH7740 
P	1	Unalloyed Steel	125-220	✓	✓
	2	Low-Alloyed Steel	220-280	✓	✓
	3	High-Alloyed Steel	280-380	✓	✓
M	4	SS - Ferritic / Martensitic	200-330		✓
	5	SS - Austenitic	200-330		✓
	6	SS - Austenitic-ferritic (Duplex)	230-260		✓
K	7	Malleable Cast Iron	130-230	✓	
	8	Grey Cast Iron	180-245	✓	
	9	Nodular Cast iron	160-250	✓	
S	11	Heat Resistant Super Alloys	200-320		✓

Good Conditions

Average Conditions

Difficult Conditions

## RECOMMENDED CUTTING CONDITIONS || Condições de corte recomendadas | Condiciones de corte recomendadas

ISO	PSM	Material	HB (Brinell)	Vc (m/min)		Feed fz (mm/t)
				← Wear Resistance	Toughness →	
				PH7920	PH7740	
P	1	Unalloyed Steel	125-220	190-350	140-300	0,10-0,90
	2	Low-Alloyed Steel	220-280	180-280	130-230	0,10-0,85
	3	High-Alloyed Steel	280-380	150-220	100-180	0,05-0,80
M	4	SS - Ferritic / Martensitic	200-330	-	120-260	0,05-0,80
	5	SS - Austenitic	200-330	-	100-200	0,05-0,80
	6	SS - Austenitic-ferritic (Duplex)	230-260	-	60-120	0,05-0,60
K	7	Malleable Cast Iron	130-230	240-380	-	0,15-0,90
	8	Grey Cast Iron	180-245	220-320	-	0,15-0,90
	9	Nodular Cast iron	160-250	180-280	-	0,10-0,80
S	11	Heat Resistant Super Alloys	200-320	-	30-110	0,10-0,80



**BALLPRO**  
**63090**

NEW

**HEADQUARTERS**

PALBIT, S.A.

P.O.Box 4 - Palhal

3854-908 - Branca ALB - Portugal

T (+351) 234 540 300 | F (+351) 234 540 301

palbit@palbit.pt | www.palbit.pt

**Branch office:**

PALBIT México

Emerson 150. Int.803-804. Colonia Chapultepec

Morales Delagación Miguel Hidalgo

C.P. 11570 México DF

T (+52) 5555 454 543 | F (+52) 5552 509 190

info@palbit.com.mx | www.palbit.com.mx



SINCE **1916**